

Target specification of Converter diode module (Tentative)

Type : 6RI100P-160

1. Maximum rating

Item		Symbol	Condition	Max.	Unit
Voltage Ratings	Repetitive peak reverse voltage	VRRM		1600	V
	Non-repetitive peak reverse voltage	VRSM		1760	V
Current Ratings	Average output current	Io	50/60Hz sine wave Tc=97°C	100	A
	One cycle surge current (50Hz)	IFSM	From rated load	1200	A
	I ² t	I ² t	From rated load	6000	A ² s
Temperature ratings	Operation junction temperature	Tj		-40 to +125	°C
	Storage junction temperature	Tstg		-40 to +125	°C
Isolation voltage		Viso	AC : 1min.	2500	V
Mounting screw torque			M5 screw		N·m

2. Electrical characteristics

Item	Symbol	Condition	min.	typ.	max.	Unit
Forward voltage	VFM	Tj=25°C, IFM=100A			1.25	V
Reverse current	IRRM	Tj=150°C, VR=VRRM			20	mA

3. Thermal characteristics

Item	Symbol	Condition	min.	typ.	max.	Unit
Thermal resistance (Junction to case)	Rth(j-c)	Per total loss			0.22	°C/W
Thermal Resistance (Case to fine)	Rth(c-f)	with thermal compound				°C/W

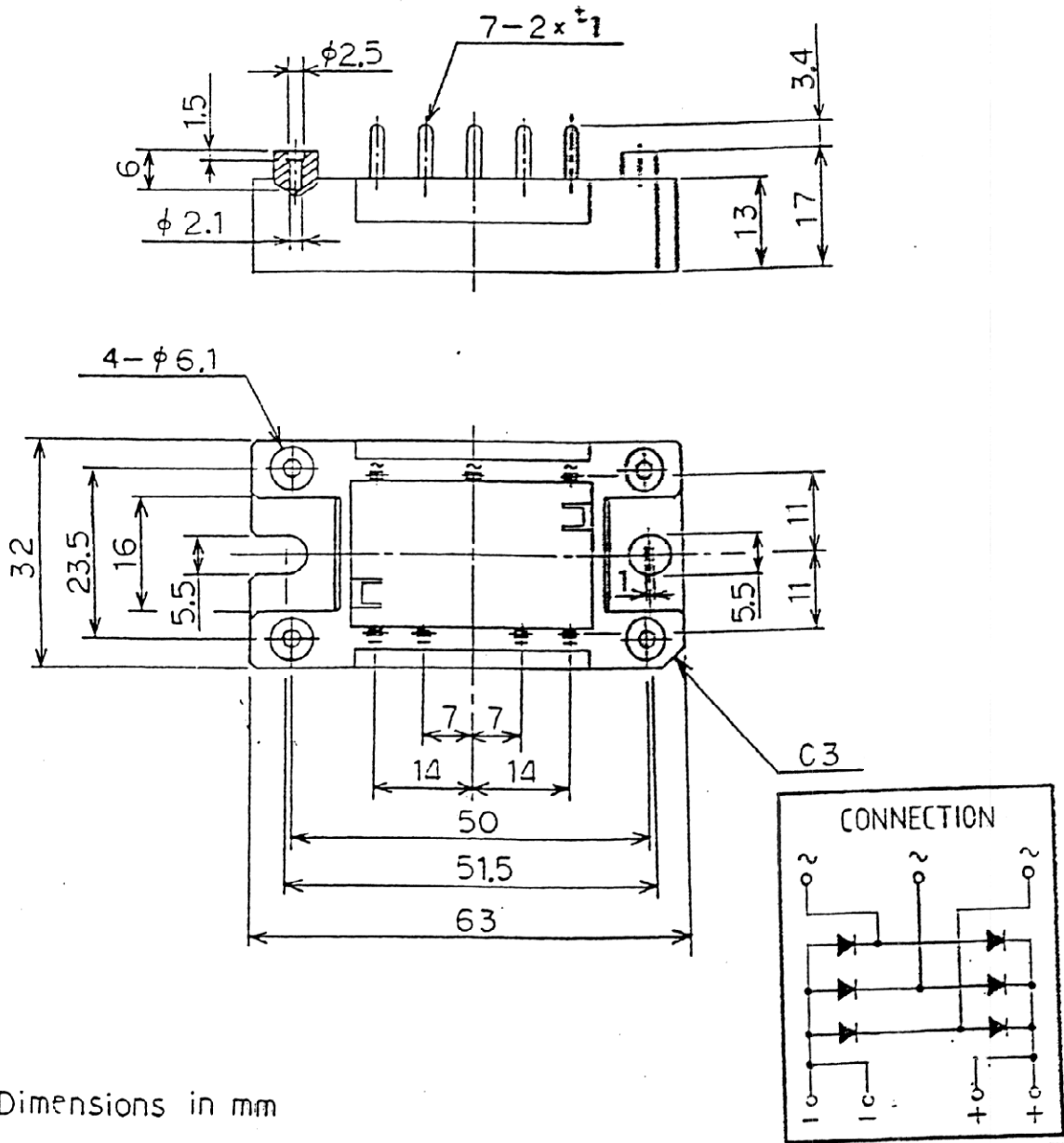
4. Outline drawing and equivalent circuit

MT5Q0484

This material and the information herein is the property of Fuji Electric Co., Ltd. They shall be neither reproduced, copied, lent, or disclosed in any way whatsoever for the use of any third party nor used for the manufacturing purposes without the express written consent of Fuji Electric Co., Ltd.

	DATE	NAME	APPROVED	Fuji Electric Co., Ltd.	
DRAWN	Sep. - 14 - 99	S. Miyashita		WG. NO.	MT5T2167
CHECKED	- -				

This material and the information hereon is the property of Fuji Electric Co. Ltd. They shall be neither reproduced, copied, lent, or disclosed in any way whatsoever for the use of any third party nor used for the manufacturing purposes without the express written consent of Fuji Electric Co. Ltd.



Dimensions in mm

	DATE	NAME	APPROVED
DRAWN	Jul.-30-'98	H. Matsushita	
CHECKED	-	-	

1 / 1

WG. NO.

Fuji Electric Co., Ltd.

MT500484